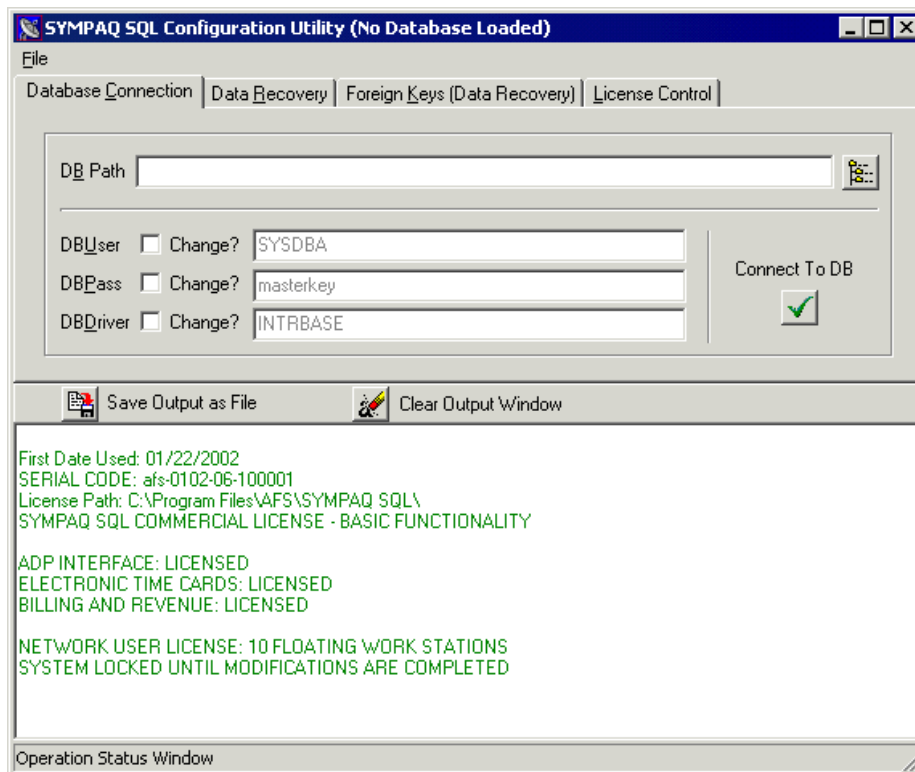


Connecting SYMPAQ SQL to the Database File


Before you can start using SYMPAQ SQL on a workstation or single computer, you must connect SYMPAQ SQL to the database file.

To connect SYMPAQ SQL to the database file:

1. If you are working on a network workstation, the Database Connection tab of the SYMPAQ SQL Configuration Utility screen is still displayed from the previous procedure.
2. If you are working on a single computer, click the **Start** button on the bottom left corner of the screen. Select **Programs**, and then **Sympaq SQL**, and then **Configuration Utility**. The Database Connection tab of the SYMPAQ SQL Configuration Utility screen is displayed:



SYMPAQ SQL Configuration Utility screen: Database Connection tab

3. Click the Browse button . The Select Current Database screen is displayed.
4. Find the drive, directory, and name of the database file.
5. Double-click the database file. The Select Current Database screen closes, and the file path and name are displayed in the DB Path field of the Database Connection tab.